



| Agtron L | | 710 | 730 |
|--------------------------------|-------|---------|---------|
| Max. power | kW/hp | 145/197 | 162/220 |
| Homologated power (2000/25 EC) | kW/hp | 139/189 | 157/213 |
| Max. torque | Nm | 793 | 836 |
| Cylinders/displacement | n°/cc | 6/7,146 | |
| Lifting capacity | kg | 10,000 | |
| Weight with cab | kg | 7,520 | |

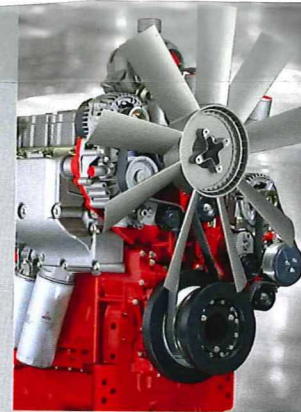
710 - 730 AGROTRON L

POWERFUL PLOUGHING.

A tractor at the top of its class: a powerful and high-torque Deutz engine along with a convenient Powershift gear train with APS make the Agtron L 710 and L 730 an ideal tractor for large enterprises and contractors.

THE FEATURES

- ▶ Deutz Common Rail Tier III engines, 6 cylinders 7146 cc, turbo intercooler, with electronic engine management
- ▶ 100 % compatible with biodiesel fuel (B100)
- ▶ 33-speed transmission (12-speed Powershift) Automatic Powershift and electro-hydraulic control
- ▶ 3 ranges: working range (from 2 to 19 km/h) transport range (up to 50 km/h at economy engine speed, limited to 40 km/h in super-economy engine speed to meet legal requirements)
- ▶ Hydraulic Powershuttle with twin oil-immersed multiplate clutches
- ▶ Electronic parking brake: mechanical-electronic system ensuring safe parking in all conditions
- ▶ Load Sensing hydraulic system with variable displacement pump, and up to 7 remote valves
- ▶ DRP geometry for maximum traction in the toughest conditions
- ▶ Front axle with hydraulic suspension and sprung cab with automatically controlled pneumatic suspension



Optimum fuel combustion thanks to the DCR technology and 7-hole injection nozzles.



The PowerComS control lever to control the major tractor functions.



Agtron L – efficient in every situation.